

FERM[®]

POWER SINCE 1965

CATALOG

DESIGNED AND DEVELOPED IN THE NETHERLANDS 

CORDLESS LI-ION SCREWDRIVER
3.6V - 1.3AH CDM1132

Specifications
Mains voltage (charger) 100-240V~, 50/60Hz
Power input 3.6V-1.3Ah
Max. torque 4Nm
No load speed 230/min.
Charging time 3-5 hours

- Features**
- Cordless, Li-ion technology
 - Spindle lock
 - LED work light
 - Magnetic chuck 1/4"
 - Metal storage case



Includes 27 pcs accessory set - Charger adapter
Availability Ex-works + FOB

CORDLESS LI-ION DRILL
12V - 1.5AH CDM1119

Specifications
Mains voltage (charger) 100-240V~, 50/60Hz
Power input 12V-1.5Ah
Max. torque (hard) 20Nm
No load speed position I 0-350/min.
No load speed position II 0-1.300/min.
Number of torque positions 17+1
Charging time 1 hour

- Features**
- Cordless, Li-ion technology
 - 2 Batteries
 - LED work light
 - Single sleeve chuck 1.0-10mm
 - Adjustable torque settings
 - Two mechanical speed settings
 - Variable electronic speed control
 - Storage case



Includes 2 Li-ion batteries (12V-1.5Ah) - 2 Double sided 50mm bits (S2) - Charger
Optional Accessories Battery CDA1142
Availability Ex-works + FOB

IMPACT DRILL
550W PDM1051

Specifications
Mains voltage 220-240V~, 50Hz
Power input 550W
No load speed 0-3.000/min.
No load impact rate 0-48.000/min.
Chuck capacity 2-13mm

- Features**
- Double function (drilling and impact drilling)
 - Depth limiter
 - Variable electronic speed control
 - Lock-on switch
 - 3m rubber cable



Includes Side handle - Depth limiter
Availability Ex-works + FOB

IMPACT DRILL
800W PDM1052

Specifications
Mains voltage 230V~, 50Hz
Power input 800W
No load speed 0-3.000/min.
No load impact rate 0-48.000/min.
Chuck capacity 2-13mm

- Features**
- Double function (drilling and impact drilling)
 - Depth limiter
 - Variable electronic speed control
 - Lock-on switch
 - 3m rubber cable



Includes Side handle - Depth limiter
Availability Ex-works + FOB

CORDLESS LI-ION DRILL
16V - 1.5AH CDM1134

Specifications
Mains voltage (charger) 100-240V~, 50/60Hz
Power input 16V-1.5Ah
Max. torque (hard) 23Nm
No load speed position I 0-350/min.
No load speed position II 0-1.300/min.
Number of torque positions 17+1
Charging time 1 hour

- Features**
- Cordless, Li-ion technology
 - LED work light
 - Single sleeve chuck 1-10mm
 - Adjustable torque settings
 - Two mechanical speed settings
 - Variable electronic speed control
 - Storage case



Includes Li-ion battery (16V-1.5Ah) - Double sided 50mm bits (S2) - Charger
Optional Accessories Battery CDA1140
Availability Ex-works + FOB

CORDLESS LI-ION DRILL
18V - 1.5AH CDM1120

Specifications
Mains voltage (charger) 100-240V~, 50/60Hz
Power input 18V-1.5Ah
Max. torque (hard) 32Nm
No load speed position I 0-350/min.
No load speed position II 0-1.300/min.
Number of torque positions 17+1
Charging time 1 hour

- Features**
- Cordless, Li-ion technology
 - 2 Batteries
 - LED work light
 - Single sleeve chuck 1.5-13mm
 - Adjustable torque settings
 - Two mechanical speed settings
 - Variable electronic speed control
 - Storage case



Includes 2 Li-ion batteries (18V-1.5Ah) - 2 Double sided 50mm bits (S2) - Charger
Optional Accessories Battery CDA1144
Availability Ex-works + FOB

ROTARY HAMMER
850W HDM1028

Specifications
Mains voltage 230-240V~, 50/60Hz
Power input 850W
No load speed 900/min.
No load impact rate 4.000/min.
Impact energy 4.5 Joule
Chuck size SDS-plus

- Features**
- 3 Functions (drilling, hammer drilling, chiseling)
 - Universal SDS-plus toolholder
 - 3m cable
 - Storage case



Includes Side handle - Dust cover - Grease tube - Depth gauge - 3 SDS concrete drills (8mm, 10mm, 12mm) - Chisel pointed (250mm) - Chisel flat (250mm) - Grease cover - Wrench
Availability Ex-works + FOB

ROTARY HAMMER
1500W HDM1037

Specifications
Mains voltage 230V~, 50Hz
Power input 1.500W
No load speed 0-950/min.
No load impact rate 0-4.400/min.
Impact energy 6.0 Joule
Chuck size SDS-plus

- Features**
- 4 Functions (drilling, hammer drilling, free rotation chiseling, chiseling)
 - Universal SDS-plus toolholder
 - Variable electronic speed control
 - 3m cable
 - Storage case



Includes Side handle - Dust cover - Grease tube - Depth gauge - 3 SDS concrete drills (8mm, 10mm, 12mm) - Chisel pointed (250mm) - Chisel flat (250mm) - Grease cover - Wrench
Availability Ex-works + FOB

CORDLESS LI-ION IMPACT WRENCH
18V - 4.0AH CDM1127

Specifications
Mains voltage (charger) 100-240V~, 50/60Hz
Power input 18V-4.0Ah
Max torque 380Nm
No load speed 0-2.300/min.
Charging time 3-5 hours

- Features**
- Cordless, Li-ion technology
 - 1/2" square drive shaft
 - LED work light
 - Variable electronic speed
 - Soft grip
 - Storage case



Includes Li-ion battery (18V-4.0Ah) - Socket 19mm - Socket 21mm - Charger
Optional Accessories Battery CDA1096
Availability Ex-works + FOB

CORDLESS COMBI DRILL BRUSHLESS
20V - 2.0AH CDM1138

Specifications
Charger voltage 230-240V~, 50Hz
Voltage 20V Li-ion (2.0Ah)
Max. torque (hard) 46Nm
No load speed position I 0-550/min.
No load speed position II 0-2.000/min.
No load impact rate position I 0-8.250/min
No load impact rate position II 0-30.000/min
Number of torque positions 25+drill+impact
Charging time 1 hour

- Features**
- Cordless, Li-ion technology
 - 2 Batteries
 - Brushless motor
 - 3 operating modes: Screwing, drilling, impact drilling
 - LED work light
 - Single sleeve metal chuck 2-13mm
 - Adjustable torque settings
 - Two mechanical speed settings
 - Variable electronic speed control
 - Side handle with soft grip
 - Storage case



Includes 2 Li-ion batteries (20V-2.0Ah) - 2 Screwdriver bits - Charger
Optional Battery CDA1130
Availability Ex-works + FOB

ANGLE GRINDER
500W - 115MM AGM1086

Specifications
Mains voltage 230V~, 50Hz
Power input 500W
No load speed 11.000/min.
Disc diameter 115mm
Spindle M14

- Features**
- Lock-on switch
 - Spindle lock
 - Adjustable open safety guard
 - Electronic restart protection
 - 3m cable



Includes Side handle - Wrench
Availability Ex-works + FOB

ANGLE GRINDER
850W - 125MM AGM1087

Specifications
Mains voltage 230V~, 50Hz
Power input 850W
No load speed 11.000/min.
Disc diameter 125mm
Spindle M14

- Features**
- Lock-on switch
 - Spindle lock
 - Adjustable open safety guard
 - Electronic restart protection
 - 3m cable



Includes Side handle - Wrench
Availability Ex-works + FOB

ANGLE GRINDER
900W - 125MM AGM1061S

Specifications
Mains voltage 230-240V~, 50Hz
Power input 900W
No load speed 12.000/min.
Disc diameter 125mm
Spindle M14

- Features**
- Paddle switch
 - 3 Side handle positions
 - Spindle lock
 - Adjustable open safety guard with quick release
 - 3m rubber cable



Includes Side handle - Wrench
Availability Ex-works + FOB

ANGLE GRINDER
2500W - 230MM AGM1088

Specifications
Mains voltage 230-240V~, 50Hz
Power input 2.500W
No load speed 6.500/min.
Disc diameter 230mm
Spindle M14

- Features**
- Lock-off safety switch
 - Spindle lock
 - Adjustable open safety guard
 - Soft start
 - 3 Side handle positions
 - 3m rubber cable



Includes Side handle - Wrench - Hexagonal key
Availability Ex-works + FOB

PRECISION CIRCULAR SAW
500W CSM1043

Specifications
Mains voltage 220-240V~, 50Hz
Input power 500W
No load speed 3.500-6.500/min.
Saw blade diameter 85mm
Saw blade bore 15mm
Cutting depth 0-22mm

- Features**
- Variable speed
 - Adjustable sawing depth
 - 3pcs saw blade set included
 - Side handle
 - Dust extraction outlet
 - 3m rubber cable
 - Storage case



Includes TCT saw blade T24 - HSS saw blade T44 - Diamond saw blade - Dust extraction adapter - Hexagonal key - Guide ruler - Handle
Optional Accessories Precision saw blade CSA1046 - CSA1047 (24T-TCT) - CSA1048 (44T-HSS) - CSA1049 Guide rail set
Availability Ex-works + FOB

PRECISION CIRCULAR SAW
500W CSM1043_S

Specifications
Mains voltage 220-240V~, 50Hz
Input power 500W
No load speed 3.500-6.500/min.
Saw blade diameter 85mm
Saw blade bore 15mm
Cutting depth 0-22mm

- Features**
- Variable speed
 - Adjustable sawing depth
 - 3pcs saw blade set included
 - Side handle
 - Dust extraction outlet
 - 3m rubber cable
 - Storage case
 - 700mm guide rail set



Includes TCT saw blade T24 - HSS saw blade T44 - Diamond saw blade - Dust extraction adapter - Hexagonal key - Guide ruler - Handle - CSA1049 Guide rail set
Optional Accessories Precision saw blade CSA1046 - CSA1047 (24T-TCT) - CSA1048 (44T-HSS) - CSA1049 Guide rail set
Availability Ex-works + FOB

CORDLESS LI-ION JIG SAW
12V - 1.5AH JSM1026

Specifications
Mains voltage (charger) 100-240V~, 50/60Hz
Power input 12V-1.5Ah
No load speed 2.100/min.
Charging time 3-5 hours

- Features**
- Cordless, Li-Ion technology
 - Quick release blade holder
 - Universal, suitable for T & U shank blades
 - Soft grip
 - Storage case



Includes Li-Ion battery (12V-1.5Ah) - Saw blade (wood) - Saw blade (metal) - Charger
Optional Accessories Battery CDA1094 - Jig saw blades 10pcs JSA1004
Availability Ex-works + FOB

JIG SAW
570W JSM1023

Specifications
Mains voltage 230V~, 50Hz
Input power 570W
No load speed 500-3.000/min.
Bevel adjustment 0-45°
Saw stroke 18mm
Saw capacity wood max. 70mm
Saw capacity steel max. 6mm

- Features**
- Lock-on switch
 - Electronic variable speed
 - 4 Pendulum positions
 - Variable bevel cut adjustment to 45°
 - Dust extraction outlet
 - 3m cable



Includes Parallel guide - Hexagonal key - Vacuum cleaner adapter - 4 T-shank saw blades
Optional Accessories Jig saw blades 10pcs JSA1004
Availability Ex-works + FOB

CIRCULAR SAW
1200W - 185MM CSM1039

Specifications
Mains voltage 230-240V~, 50Hz
Input power 1.200W
Bevel adjustment 0-45°
No load speed 5.000/min.
Saw blade diameter 185mm
Saw blade bore 20mm
Cutting depth max. 65mm (90°)
Cutting depth max. 43mm (45°)

- Features**
- Angle and depth adjustment
 - Parallel guide
 - Spindle lock
 - 3m rubber cable



Includes Hexagonal key - Parallel guide - TCT saw blade 185mm T24
Optional Accessories Saw blade CSA1007 (T24)
Availability Ex-works + FOB

WALL SLOTTER
1700W - 125MM WSM1009

Specifications
Mains voltage 230-240V~, 50Hz
Input power 1.700W
No load speed 4.000/min.
Cutting depth 0-28mm
Cutting width 14-19-29mm
Disc diameter 125mm

- Features**
- Overload protection
 - Soft start
 - Spindle lock
 - Laser guidance
 - Adjustable cutting depth and width
 - 3m cable
 - Storage case



Includes 2 Diamond discs - Universal vacuum cleaner adapter - Chisel - Hexagonal key - Batteries for laser
Optional Accessories Saw blade set 2pcs WSA1001 (125mm open)
Availability Ex-works + FOB

JIG SAW
710W JSM1014

Specifications
Mains voltage 230V~, 50Hz
Input power 710W
No load speed 800-3.000/min.
Bevel adjustment 0-45°
Saw stroke 20mm
Saw capacity wood max. 110mm
Saw capacity steel max. 10mm

- Features**
- Lock-on switch
 - Electronic variable speed
 - 4 Pendulum positions
 - Variable bevel cut adjustment to 45°
 - Dust extraction outlet
 - 3m cable



Includes Parallel guide - Hexagonal key - Vacuum cleaner adapter - 3 T-shank saw blades
Optional Accessories Jig saw blades 10pcs JSA1004
Availability Ex-works + FOB

RECIPROCATING SAW
710W RSM1019

Specifications
Mains voltage 230-240V~, 50Hz
Input power 710W
No load speed 0-2.800/min.
Saw stroke 20mm

- Features**
- Lock-on switch
 - Electronic variable speed
 - Toolless saw blade release
 - Adjustable front plate
 - 3m rubber cable



Includes Hexagonal key - 2 Saw blades
Optional Accessories Reciprocating blades 9pcs RSA1001
Availability Ex-works + FOB

WALL SLOTTER
1600W - 150MM WSM1008

Specifications
Mains voltage 230V~, 50Hz
Input power 1.600W
No load speed 6.000/min.
Cutting depth 5-40mm
Cutting width 8-30mm
Disc diameter 150mm

- Features**
- Overload protection
 - Soft start
 - Power feedback
 - Spindle lock
 - Laser guidance
 - Adjustable cutting depth and width
 - 3m cable
 - Canvas storage bag



Includes 2 Diamond discs - Universal vacuum cleaner adapter - Chisel - Batteries for laser
Optional Accessories Saw blade set 2pcs WSA1002 (150mm open)
Availability Ex-works + FOB

PAINT/CEMENT MIXER
1400W PMM1006

Specifications
Mains voltage 230V~, 50Hz
Input power 1.400W
No load speed (I) 180-380/min.
No load speed (II) 300-650/min.

- Features**
- Lock-on switch
 - Variable electronic speed control
 - Two mechanical speed settings
 - Whisk included
 - 3m rubber cable



Includes Whisk for general purposes - 2 Wrenches
Optional Accessories Whisk PMA1004 - Whisk PMA1008
Availability Ex-works + FOB

DETAIL SANDER
220W PSM1013

Specifications

Mains voltage	230V~, 50Hz
Input power	220W
No load speed	13.000/min.
Sanding movements	26.000/min.
Sanding paper size	145x145x88mm triangle shape

Features

- Hook & Loop base plate
- Active dust extraction
- 3m cable
- Storage case



Includes 5 Sanding papers (P80) - 5 Sanding papers (P120) - Dust bag
Optional Accessories Sanding paper set 5pcs PSA1007 (P80) - PSA1008 (P120)
Availability Ex-works + FOB

ORBITAL SANDER
135W PSM1027

Specifications

Mains voltage	230V~, 50Hz
Input power	135W
No load speed	12.000/min.
Sanding movements	24.000/min.
Sanding surface	90x187mm

Features

- Hook & Loop base plate
- Paper clamping system
- Universal vacuum cleaner adapter
- 3m rubber cable



Includes Sanding paper (P80) - Vacuum cleaner adapter
Availability Ex-works + FOB

BELT SANDER
900W BSM1024

Specifications

Mains voltage	230V~, 50Hz
Input power	900W
Belt dimension	75x533mm
Sanding surface	75x135mm
Belt speed	380m/min.

Features

- Electronic variable speed
- Quick release belt exchange
- 3m cable



Includes Sanding belt (P80) - Dust bag
Optional Accessories Sanding belt set 3pcs P60, P80, P120 (BSA1013)
Availability Ex-works + FOB

PLANER
650W PPM1010

Specifications

Mains voltage	230V~, 50Hz
Input power	650W
No load speed	16.500/min.
Max. planing width	82mm
Max. planing depth max	2mm

Features

- Lock-on switch
- Adjustable planing depth
- Reversible hard metal planing knives
- 3m cable



Includes Parallel guide - Spare belt - Dust bag
Optional Accessories Chisel set 2pcs 82mm PPA1003
Availability Ex-works + FOB

ORBITAL SANDER
180W PSM1024

Specifications

Mains voltage	230V~, 50Hz
Input power	180W
No load speed	12.000/min.
Sanding movements	24.000/min.
Sanding surface	90x187mm

Features

- Aluminum Hook & Loop base plate
- Paper clamping system
- Universal vacuum cleaner adapter
- 3m cable



Includes 5 Sanding papers (P80) - 5 Sanding papers (P120) - Vacuum cleaner adapter
Optional Accessories Sanding paper set 5pcs PSA1031 P60 P80 P120
Availability Ex-works + FOB

DELTA SANDER
280W DSM1009

Specifications

Mains voltage	230-240V~, 50Hz
Input power	280W
No load speed	6.000-11.000/min.
Sanding movements	12.000-22.000/min.
Sanding surface	90x90x90mm

Features

- Hook & Loop base plate
- Electronic variable speed
- Universal vacuum cleaner adapter
- 3m cable



Includes 2 Sanding papers (P80 / wood) - 2 Sanding papers (P80 / paint) - 2 Sanding papers (P80 / stone) - Vacuum cleaner adapter - Protection cover for sanding pad nose
Optional Accessories Sanding paper set 10pcs PSA1033 (P80) - PSA1034 (P120)
Availability Ex-works + FOB

ROUTER
1200W PRM1021

Specifications

Mains voltage	230-240V~, 50Hz
Power input	1200W
No load speed	9.000-30.000/min.
Max. cutting depth	35mm
Max. cutter diameter	32mm

Features

- Depth adjustment
- Electronic variable speed control
- Dust extraction connector
- Spindle lock
- 3m cable



Includes Parallel guide - Centring pin - Template guide - Spanner - 3pcs bit set - 6mm+8mm collet
Optional Accessories Router bit set 20pcs PRA1008 - Router table PRA1011
Availability Ex-works + FOB

ROUTER
1300W PRM1015

Specifications

Mains voltage	230V~, 50Hz
Power input	1300W
No load speed	9.000-30.000/min.
Max. cutting depth	60mm
Max. cutter diameter	30mm

Features

- Accurate depth adjustment: 0.1mm
- Electronic variable speed control
- LED work light
- Lock-off switch in handle
- Dust extraction connector
- Spindle lock
- 3m cable



Includes Parallel guide - Template guide - Wrench - Hexagonal key - 6pcs bit set - 6mm+8mm collet
Optional Accessories Router bit set 20pcs PRA1008 - Router table PRA1011
Availability Ex-works + FOB

RANDOM ORBITAL SANDER
430W ESM1010

Specifications

Mains voltage	230-240V~, 50Hz
Input power	430W
No load speed	5.000-13.000/min.
Base plate diameter	125mm

Features

- Hook & Loop base plate
- Electronic variable speed
- 3m cable



Includes Dust collection box - 2 Sanding papers (P60) - 2 Sanding papers (P80) - 2 Sanding papers (P120)
Availability Ex-works + FOB

PRECISION BELT SANDER
400W EFM1001

Specifications

Mains voltage	230-240V~, 50Hz
Input power	400W
No load speed	1.070-1.650/min.
Belt length	455mm
Belt width	8 and 13mm

Features

- Electronic variable speed
- Quick release belt exchange
- 3m cable
- Storage case



Includes Dust bag - Vacuum cleaner adapter - 3 Sanding arm (8mm, 13mm, 13mm angled) - 12 Sanding papers
Optional Accessories Sanding belt set 8pcs P40, P80, P120 EFA1003 (10mm) - EFA1004 (13mm)
Availability Ex-works + FOB

ROUTER TABLE
PRA1011

Specifications

Mains voltage	230V~, 50Hz
Table size	455x330mm
Max. base plate diameter router	162mm

Features

- Safety switch
- Dust extraction port
- Adjustment plate
- Robust and stable aluminum construction, provided with rubber feet
- Fits all current FERM routers and most other routers



Includes Fence - Featherboard - Vacuum cleaner adapter
Availability Ex-works + FOB

PRECISION BISCUIT JOINTER
900W BJM1009

Specifications

Mains voltage	230V~, 50Hz
Input power	900W
No load speed	11.000/min.
Saw blade	100x22mm
Saw blade thickness	4mm
Cutting depth	0-14mm
Base adjustment	0°-90°
Biscuits size	0-10-20

Features

- For creating precise joints and sawing parquet along walls
- Easy adjustment for angle and material thickness
- Aluminum base plate
- Spindle lock function
- Storage case



Includes Saw blade 100x22x4mm - Hexagon key - Dustbag - 50 Biscuits (#20)
Optional Accessories Biscuits 50pcs 56x23x4mm BJA1004 - Saw blade BJA1005
Availability Ex-works + FOB

CORDLESS LI-ION MULTI TOOL
12V - 1.5AH OTM1006

Specifications
Mains voltage (charger) 100-240V~, 50/60Hz
Power input 12V-1.5Ah
No load speed 5.000-18.000/min.
Oscillation angle 3.0°
Charging time 3-5 hours

- Features**
- Cordless, Li-Ion technology
 - Universal blade connection
 - Electronic variable speed
 - Easy blade exchange
 - Soft grip
 - Storage case



Includes Li-Ion battery (12V-1.5Ah) - 3 Sanding papers - Hook & Loop sanding base plate - HSS half round cutting blade - Plunge cutting blade - Scraping knife - Hexagon key
Optional Accessories Battery CDA1094 - Plunge cutting blade OTA1001 - Scraping knife OTA1002 - Sanding pad OTA1003 - HSS segment saw blade OTA1004 - Carbide blade OTA1005 - Multi tool accessory set 4 pcs OTA1007
Availability Ex-works + FOB

MULTI TOOL
280W OTM1005

Specifications
Mains voltage 230V~, 50Hz
Input power 280W
No load speed 11.000-20.000/min.
Oscillating angle 2.8°

- Features**
- Lock-on switch
 - LED work light
 - Universal vacuum cleaner adapter
 - Electronic variable speed
 - Easy blade exchange
 - 3m cable
 - Storage case



Includes Vacuum cleaner adapter - 10 Sanding papers - Hook & Loop sanding base plate - HSS half round cutting blade - Plunge cutting blade - Scraping knife - Carbide saw blade - Hexagon key
Optional Accessories Plunge cutting blade OTA1001 - Scraping knife OTA1002 - Sanding pad OTA1003 - HSS segment saw blade OTA1004 - Carbide blade OTA1005 - Multi tool accessory set 4 pcs OTA1007
Availability Ex-works + FOB

ELECTRIC BLOWER
400W EBM1003

Specifications
Mains voltage 220-240V~, 50Hz
Input power 400W
No load speed 6.000-14.000/min
Max. air displacement 3.0m³/min
Blow pipe size 220x25mm

- Features**
- Lock-on switch
 - Electronic variable speed
 - Use as blower and vacuum cleaner
 - 3m cable



Includes Rubber blow pipe - Dust bag
Availability Ex-works + FOB

ELECTRIC TACKER
MAX. 16MM ETM1004

Specifications
Mains voltage 230V~, 50Hz
Staple width 11.3mm
Staple length 8-16mm
Nail length 15-16mm

- Features**
- Impact control wheel
 - Anti-jam mechanism
 - Compact design
 - Safety switch



Includes 400 Staples 14mm - 100 nails 15mm
Optional Accessories Nails 1500pcs ETA1005 (15mm) - Staples 2000pcs ETA1009 (8mm) - Staples 2000pcs ETA1010 (14mm)
Availability Ex-works + FOB

CORDLESS LI-ION COMBITOOL
12V - 1.5AH CTM1016

Specifications
Mains voltage (charger) 100-240V~, 50/60Hz
Power input 12V-1.5Ah
No load speed 3.000-20.000/min.
Charging time 3-5 hours

- Features**
- Cordless, Li-Ion technology
 - Electronic variable speed
 - Suitable for 2.4mm and 3.2mm accessories
 - Soft grip
 - Spindle lock
 - Storage case



Includes 1 Li-Ion battery (12V-1.5Ah) - 43 Accessories - Collet Ø2.4mm - Collet Ø3.2mm - Wrench - Charger
Optional Accessories Battery CDA1094 - Combitool set 100pcs CTA1007 - Combitool set 40pcs CTA1008
Availability Ex-works + FOB

COMBITOOL
160W CTM1012

Specifications
Mains voltage 230V~, 50Hz
Input power 160W
No load speed 15.000-35.000/min.
Collet diameter 2.4 and 3.2mm

- Features**
- Electronic variable speed
 - Spindle lock
 - 3m cable
 - Storage case



Includes 40 Accessories - Collet Ø2.4mm - Collet Ø3.2mm - Wrench
Optional Accessories Combitool set 100pcs CTA1007 - Combitool set 40pcs CTA1008
Availability Ex-works + FOB

CORDLESS LI-ION GLUE GUN
7.2V - 1.5AH GGM1003

Specifications
Mains voltage (charger) 100-240V~, 50/60Hz
Power input 7.2V-1.5Ah
Runtime on 1 charge: 45min.
Charging time 1 hour
Glue stick size Ø7mm

- Features**
- Cordless, Li-Ion technology
 - Fast: 15s pre-heat time
 - 170° C work temp.
 - Automatic stop (after 5 minutes of inactivity)
 - Soft grip
 - Storage case



Includes 6 Glue sticks GGA1003 (7x150mm)
Availability Ex-works + FOB

GLUE GUN
75W GGM1004

Specifications
Mains voltage 220-240V~, 50Hz
Rated power 25W
Max. power 75W
Glue stick diameter 11.2mm
Heat-up time 3-5 min
Glue flow 8-12g/min

- Features**
- Adjustable table stand
 - Anti-drip control
 - Insulated nozzle
 - Protection side lifts



Includes 4 Glue sticks 150mm
Optional accessories 6 Glue sticks GGA1005 (11.2x100mm)
Availability Ex-works + FOB

COMBITOOL SET
160W CTM1010

Specifications
Mains voltage 230V~, 50Hz
Input power 160W
No load speed 15.000-35.000/min.
Collet diameter 2.4 and 3.2mm

- Features**
- Electronic variable speed
 - Spindle lock
 - 3m cable
 - Flexible shaft
 - Adjustable stand
 - Desk stand
 - Storage case



Includes 40 Accessories - Collet Ø2.4mm - Collet Ø3.2mm - Wrench
Optional Accessories Combitool set 100pcs CTA1007 - Combitool set 40pcs CTA1008
Availability Ex-works + FOB

HOT AIR GUN
2000W HAM1015

Specifications
Mains voltage 220-240V~, 50Hz
Input power 2.000W
Pos. I: 300 L/min. 450°C
Pos. II: 500 L/min. 600°C

- Features**
- Overheat protection
 - Stationary mode
 - 2 Heat and air flow settings
 - 3m cable
 - Storage case



Includes Fishtail diffuser - Deflector diffuser
Availability Ex-works + FOB

SOLDERING STATION
48W SGM1013

Specifications
Mains voltage 220-240V~, 50Hz
Input power 48W
Temperature 160°C - 480°C

- Features**
- Adjustable temperature
 - Accessory drawer
 - Overheat protection
 - Mica heating element
 - Replaceable tips
 - Soft grip on bolt



Includes Flat tip - Point tip - Sponge - Solder wire Ø1.0mm - Solder wire Ø1.5mm
Availability Ex-works + FOB

SOLDERING / BLOW TORCH
MAX. 1500°C SGM1006

Specifications
Runtime on single fill 35min.
Max. flame temperature 1300°C
Max. soldering temperature 500°C

- Features**
- For precise soldering, shrinking, hot cutting, lighting your fireplace, for kitchen use etc.
 - Suitable for standard lighter gas
 - Storage case



Includes Standard tip - Chisel tip - Diagonal tip - Hot blower tip - Hot knife tip - Scraper - 2 Wrenches - De-soldering sponge
Availability Ex-works + FOB

MULTIPURPOSE SPRAY GUN 110W SGM1012

Specifications

Mains voltage	220-240V~, 50Hz
Input power	110W
Max flow	300ml/min.
Container	800ml

Features

- Adjustable flow control
- Easy cleaning
- Airless spray
- 3m cable



Includes Paint container - Flexible nozzle extension - Spare nozzle - Viscosity measuring cup - Cleaning pin - Ear plugs - Wrench - Piston
Availability Ex-works + FOB

BENCH PILLAR DRILL 350W TDM1026

Specifications

Mains voltage	230V~, 50Hz
Input power	350W
Chuck capacity	13mm
Taper of spindle	B16
No load speed	500-890-1.400-1.900-2.500/min.
Total height	600mm
Travel of spindle	52mm
Horizontal distance	104mm
	chuck to column

Features

- Cast iron base for maximum stability
- Key chuck (13mm)
- In height adjustable working table with two way angle adjustment from 0° to 45°
- Safety switch



Includes Chuck key
Optional Accessories Machine vise TDA1013
Availability Ex-works + FOB

SCROLL SAW 120W SSM1007

Specifications

Mains voltage	230V~, 50Hz
Input power	120W
Bevel adjustment table	0-45°
Max. working depth	406mm
Max. Sawing capacity at 90°	50mm
Max. Sawing capacity at 45°	23mm
No load speed	400 - 1600/min

Features

- Safety switch
- Foot pedal switch
- Adjustable speed
- Quick blade tensioning
- Transparent guard
- Working table adjustable from 0-45°
- Flexible dust blower
- Vacuum cleaner connection
- Rubber feet



Includes 2 Saw blades 10 TPI - 2 Saw blades 15 tpi - 2 Saw blades 25 TPI - 2 Saw blade adapters
Optional Accessories Scroll saw blade set 5pcs SSA1001 (15TPI) - SSA1002 (10TPI) - SSA1003 (18TPI) - SSA1004 (25TPI)
Availability Ex-works + FOB

RADIAL MITRE SAW 1500W - 210MM MSM1039

Specifications

Mains voltage	220-240V~, 50Hz
Power input	1.500W
No load speed	4.500/min.
Max. saw capacity	70x305mm
Mitre 0°, bevel 0°	35x305mm
Mitre 0°, bevel 45°	70x210mm
Mitre 45°, bevel 0°	35x210mm
Mitre 45°, bevel 45°	35x210mm

Features

- Metal base plate
- Sliding fence
- Laser guidance
- Transparent saw blade cover
- Mountable to workbench
- Pre-settings for quick and accurate mitre-angle adjustment
- Table extensions



Includes TCT saw blade 210x30mm T48 - Hexagonal key - Dust bag - Work piece clamp - 2 Extension bars
Optional Accessories Saw blade 210mm MSA1024 (24T) - MSA1025 (40T)
Availability Ex-works + FOB

BENCH GRINDER 150W - 150MM BGM1019

Specifications

Mains voltage	230V~, 50Hz
Input power	150W
Grinding stone dimensions	150x16mm
Grinding stone grain	P36 & P60
Grinding stone bore	12.7mm
No load speed	2.950/min.

Features

- Dust protected switch
- Metal base
- Mountable to work bench



Includes Grinding stones (P36 & P60) - 2 Spark arresters - 2 Work rests - Safety glasses
Optional Accessories Grinding stone 150mm BGA1053 (16mm - P36) - BGA1054 (16mm - P60)
Availability Ex-works + FOB

BENCH GRINDER 250W - 150MM BGM1020

Specifications

Mains voltage	230V~, 50Hz
Input power	250W
Grinding stone dimensions	150x20mm
Grinding stone grain	150x40mm
Grinding stone bore	P36 (grey)
No load speed	P80 (white)
	12.7mm
	2.950/min.

Features

- Dust protected switch
- Metal base
- Mountable to work bench



Includes Grinding stones (P36 & P80) - 2 Spark arresters - 2 Work rests - Safety glasses
Optional Accessories Grinding stone 150mm BGA1055 (20mm - P36) - BGA1056 (40mm - P80)
Availability Ex-works + FOB

RADIAL MITRE SAW 1900W - 254MM MSM1040

Specifications

Mains voltage	230-240V~, 50Hz
Power input	1.900W
No load speed	4.500/min.
Max. saw capacity	70x310mm
Mitre 0°, bevel 0°	40x310mm
Mitre 0°, bevel 45°	70x210mm
Mitre 45°, bevel 0°	40x210mm
Mitre 45°, bevel 45°	40x210mm

Features

- Metal base plate
- Sliding fence
- Laser guidance
- Transparent saw blade cover
- Mountable to workbench
- Pre-settings for quick and accurate mitre-angle adjustment
- Table extensions



Includes TCT saw blade 254x30mm T60 - Hexagonal key - Dust bag - Work piece clamp - 2 Extension bars
Optional Accessories Saw blade 255mm MSA1028 (40T) - MSA1029 (72T)
Availability Ex-works + FOB

TABLE SAW 800W - 200MM TSM1036

Specifications

Mains voltage	230-240V~, 50Hz
Input power	800W
No load speed	2.950/min.
Table size	505x373mm
Saw blade diameter	200mm
Saw blade bore	16mm
Cutting capacity max.	43mm (bevel 0°)
Cutting capacity max.	27mm (bevel 45°)

Features

- Safety switch
- Induction motor
- Adjustable table 0-45°
- Mountable to workbench
- Parallel/mitre guide
- 2m cable



Includes TCT saw blade 200x16mm T24 - Wrench - Mitre guide - Parallel guide - Push stick
Optional Accessories Saw blade 200mm MSA1021 (24T) - MSA1022 (40T)
Availability Ex-works + FOB

WET AND DRY GRINDER 250W BGM1021

Specifications

Mains voltage	230V~, 50Hz
Input power	250W
Grinding stone dimensions	150x20mm
Grinding stone grain	200x40mm
Grinding stone bore	P36 (dry)
	P80 (wet)
No load speed	12.7mm(dry)
	20mm (wet)
	2.950/min(dry)
	135/min(wet)

Features

- Dust protected switch
- Metal base
- Mountable to work bench



Includes Grinding stones (P36 & P80) - 2 Spark arresters - 2 Work rests - Safety glasses
Optional Accessories Grinding stone BGA1055 (150mm - 20mm - P36) - BGA1057 (200mm - 40mm - wet use)
Availability Ex-works + FOB

BENCH SANDER 350W BGM1022

Specifications

Mains voltage	230-240V~, 50Hz
Input power	350W
Belt dimension	100x915mm
Disc diameter	150mm
Belt speed	292m/min.
Disc speed	1.450/min.
Belt position adjustable	0°-90°
Table position adjustable	0°-45°

Features

- Hook & Loop disc base
- Dust protected safety switch
- Adjustable sanding belt position
- Adjustable working table
- Quick release belt exchange
- Rubber feet
- 2pcs 32mm 90° vacuum cleaner adapters



Includes 2 Sanding belts (P80, P120) - 2 Sanding discs (P80, P120) - Mitre guide - 2 Hexagonal keys
Optional Accessories Sanding belt set 3pcs BGA1058 (P60, P80, P150) - BGA1060 (P100) - Sanding disc set 10pcs BGA1062 (P60, P100, P150)
Availability Ex-works + FOB

TABLE SAW 1800W - 250MM TSM1033

Specifications

Mains voltage	230-240V~, 50Hz
Input power	1.800W
No load speed	4.700/min.
Saw blade adjustment	0-45°
Max. cutting capacity	0° 74mm - 45° 63mm
Saw blade diameter	250mm
Table height	865mm
Table size (fully extended)	930x625mm

Features

- Safety switch
- Overload protection
- Dust extraction
- Extendable aluminum table top
- Height adjustable saw blade
- Angle adjustable saw blade



Includes TCT saw blade 250x30mm T40 - Wrench - Hexagonal key - Mitre guide - Parallel guide - Push stick - 4 rubber feet - 2 tilt prevention frames - Safety glasses - Ear plugs
Optional Accessories Saw blade 250mm MSA1026 (40T) - MSA1027 (72T)
Availability Ex-works + FOB

TILE CUTTER 600W - 180MM TCM1010

Specifications

Mains voltage	230V~, 50Hz
Input power	600W
No load speed	2.950/min.
Table adjustment	0-45°
Table size	360x330mm
Disc diameter	180mm
Saw blade bore	22.2mm

Features

- Safety switch
- Adjustable table from 0-45°
- Durable chrome plated table
- Parallel / mitre guide
- Low noise induction motor
- Water cooling
- Mountable to workbench



Includes Diamond saw blade 180x22.2mm - Wrench - Parallel guide - Water tray - Safety glasses - Ear plugs
Optional Accessories Diamond disc 180mm TCA1004
Availability Ex-works + FOB

TILE CUTTER 900W - 200MM TCM1011

Specifications	
Mains voltage	230V~, 50Hz
Input power	900W
No load speed	2.950/min.
Table adjustment	0-45°
Table size	500x400mm
Disc diameter	200mm
Saw blade bore	25.4mm



- Features**
- Safety switch
 - Adjustable table from 0-45°
 - Durable chrome plated table
 - Parallel / mitre guide
 - Low noise induction motor
 - Water cooling
 - Mountable to workbench

Includes Diamond saw blade 200x25.4mm - Wrench - Parallel guide - Water tray - Safety glasses - Ear plugs
Availability Ex-works + FOB

ARC WELDER 40 - 100A WEM1042

Specifications	
Mains voltage	230V~, 50Hz
Welding current	40-100A
Electrode thickness	1.6-2.5mm
Welding cable	2.1m
Earth cable	1.5m



- Features**
- Current indicator
 - Thermal cut-out with control lamp
 - Forced cooling

Includes Welding mask - Scaling hammer/ Steel-wire brush - Quick instruction card
Optional Accessories Electrodes 12pcs WEA1016 (2mm) - WEA1017 (2.6mm) - Electrodes 1kg WEA1011 (2mm) - WEA1012 (2.6mm) - Electrodes 5kg WEA1014 (2.6mm)
Availability Ex-works + FOB

ELECTRIC LEVER HOIST 500W LHM1011

Specifications	
Mains voltage	230V~, 50Hz
Power input	500W
Rated load with pulley	250 kg
Rated load without pulley	125 kg
Lifting height with pulley	6m
Lifting height without pulley	12m
Lifting speed with pulley	4m/min.
Lifting height without pulley	8m/min.



- Features**
- High lifting capacity
 - Long lifting cable
 - Non rotating steel rope
 - Remote control equipped with safety switch

Includes Mounting brackets - Load hooks
Availability Ex-works + FOB

PLATFORM TRUCK MAX. 150KG TTM1027

Specifications	
Max. carrying capacity	150kg
Platform dimensions	734x480mm
	2 Swivel wheels
	2 Fixed wheels



- Features**
- Rubber wheels
 - Foldable push bar
 - Large plateau

Availability Ex-works + FOB

ARC WELDER 55 - 160A WEM1035

Specifications	
Mains voltage	230/400V~, 50Hz
Welding current	400V max. 160A
	230V max. 140A
Electrode thickness	2.0-4.0mm
Welding cable	2.1m
Earth cable	1.5m



- Features**
- Current indicator
 - Thermal cut-out with control lamp
 - Suitable for use with either 230V~ or 400V~
 - Forced cooling

Includes Welding mask - Scaling hammer/ Steel-wire brush - Quick instruction card
Optional Accessories Electrodes 12pcs WEA1016 (2mm) - WEA1017 (2.6mm) - WEA1018 (3.2mm) - Electrodes 1kg WEA1011 (2mm) - WEA1012 (2.6mm) - WEA1013 (3.2mm) - Electrodes 5kg WEA1014 (2.6mm) - WEA1015 (3.2mm)
Availability Ex-works + FOB

BATTERY CHARGER 6V / 12V BCM1021

Specifications	
Mains voltage	230V~, 50Hz
Power Input	Max. 110W
Battery capacity	Min. 20Ah
	Max. 75Ah



- Features**
- Ampere meter
 - 6/12V charging

Includes Set battery clamps - 10A fuse
Availability Ex-works + FOB

HAND TRUCK MAX. 225KG TTM1028

Specifications	
Max. carrying capacity	225kg
Size	1.130x545x430mm
Lifting plate thickness	3.5mm



- Features**
- Ball bearing wheels with inflatable tyres
 - Stable base plate
 - Steel rims

Includes Availability Ex-works + FOB

PORTABLE COMPRESSOR 1100W CRM1049

Specifications	
Mains voltage	230V~, 50Hz
Power input	1.100W (S3-15%)
No load speed	3.550/min.
Air displacement	180 liter/min.



- Features**
- Oil free
 - 3m Rubber hose with universal quick coupling
 - Carrying handle with soft grip
 - 5m cable

Includes Tyre inflator with manometer - Blow gun nozzle - 3 Adapters
Availability Ex-works + FOB

BATTERY CHARGER 6V / 12V BCM1020

Specifications	
Mains voltage	230V~, 50Hz
Power Input	Max. 400W
Fast charge	12V DC,
	12A 100S
	6A 180S
Normal charge	6/12V DC, 2A



- Features**
- Transport handle
 - Fast and normal charge
 - Deep cycle
 - LCD display and indicator
 - Reverse polarity, short circuit and overload protection
 - Recharge of drained batteries

Includes Set battery clamps - 80A fuse
Availability Ex-works + FOB

TROLLY JACK KIT MAX. 2000KG TJM1008

Specifications	
Max. lifting capacity	2.000kg
Min. height	135mm
Max. height	356mm
Lifting height	221mm



- Features**
- Solid construction with integrated safety valve against overloading
 - Control release system
 - Two ball bearing castors
 - Carrying handle
 - Storage case

Availability Ex-works + FOB

OIL LUBRICATED COMPRESSOR 1.1HP - 750W - 8L CRM1044

Specifications	
Mains voltage	230V~, 50Hz
Power input	750W-1.1HP
Tank capacity	8L
No load speed	2.850/min.
Air displacement	118 liter/min.



- Features**
- Powerful single cylinder pump
 - Pressure adjustment from 0-8 bar
 - Silent direct drive induction motor
 - Universal 1/4" quick coupling
 - 2 Manometers for tank and outlet pressure

Includes Oil
Optional Accessories Air accessory set 6pcs ATA1025 Coiled hose 5m + couplings ATA1026 Air hose 10m + coupling ATA1027 Hose reel 9m ATA1033
Availability FOB

OIL LUBRICATED COMPRESSOR 1.5HP - 1100W - 24L CRM1045

Specifications	
Mains voltage	230V~, 50Hz
Power input	1100W-1.5HP
Tank capacity	24L
No load speed	2.850/min.
Air displacement	155 liter/min.



- Features**
- Powerful single cylinder pump
 - Pressure adjustment from 0-8 bar
 - Silent direct drive induction motor
 - Universal 1/4" quick coupling
 - 2 Manometers for tank and outlet pressure

Includes Oil
Optional Accessories Air accessory set 6pcs ATA1025 Coiled hose 5m + couplings ATA1026 Air hose 10m + coupling ATA1027 Hose reel 9m ATA1033
Availability Ex-works + FOB

**OIL LUBRICATED COMPRESSOR
2HP - 1500W - 50L CRM1046**

Specifications

Mains voltage 230V~, 50Hz
Power input 1.500W-2HP
Tank capacity 50L
No load speed 2.850/min.
Air displacement 206 liter/min.



Features

- Powerful single cylinder pump
- Pressure adjustment from 0-8 bar
- Silent direct drive induction motor
- Universal 1/4" quick coupling
- 2 Manometers for tank and outlet pressure

Includes Oil
Optional Accessories Air accessory set 6pcs ATA1025 Coiled hose 5m + couplings ATA1026
Air hose 10m + coupling ATA1027 Hose reel 9m ATA1033
Availability FOB

**COMPRESSOR HOSE REEL
ATA1033**

Specifications

Outlet 9m hose
Operating pressure 8 bar



Includes DIN coupling - Orion coupling
Availability Ex-works + FOB

**IMPACT WRENCH
ATM1043**

Specifications

Operating pressure 6.3 bar
No load speed 7.000/min
Bolt size capacity 16mm
Max. torque 310Nm
Drive shaft 1/2" square



Includes 10 Air sockets - 5" Extension bar - Oil - HEX wrench - Nipple -
Mini oiler - DIN coupling - Orion coupling - Storage case
Availability Ex-works + FOB

**HIGH PRESSURE CLEANER
1400W GRM1022**

Specifications

Mains voltage 220-240V~, 50/60Hz
Power input 1400W
Max. pressure 110 bar
Max. waterflow 390 l/h



Features

- Aluminium pump
- Auto stop system
- Accessory storage facility
- 5m water outlet hose
- 5m power cable

Includes Spray gun - Adjustable spray lance - Turbo lance - Lance extension -
Water inlet adapter with filter - Water connector - Cleaning pin
Optional Accessories Brush GRA1001, Rotary brush GRA1002
Availability FOB

**AIR TOOL SET, 5PCS
ATM1036**

Specifications

Spray gun
- Operating pressure 4.5-6 bar
- Container capacity 575 cc

Tyre inflator with pressure gauge
- Operating pressure 0-7 bar

Air blow gun
- Recommended pressure 2-4 bar

Cleaning gun
- Recommended pressure 2-4 bar

5m Coiled hose
- Connection universal / DIN



Availability Ex-works + FOB

**PAINT SPRAY GUN
ATM1039**

Specifications

Operating pressure 4.5-6 bar
Container capacity 400 cc



Includes DIN coupling - Orion coupling
Availability Ex-works + FOB

**PAINT SPRAY GUN
ATM1040**

Specifications

Operating pressure 4.5-6 bar
Container capacity 750 cc



Includes DIN coupling - Orion coupling
Availability Ex-works + FOB

**TYRE INFLATOR
ATM1041**

Specifications

Operating pressure 0-8 bar



Includes DIN coupling - Orion coupling
Availability Ex-works + FOB

**AIR NAILER/STAPLER
ATM1051**

Specifications

Operating pressure 4-7 bar
Staple length 16-40mm gauge 18
Staple width 5.7mm
Nail length 15-50mm gauge 18
Staple capacity 100 pcs



Includes Oil - 100 staples 40mm - 100 nails 20mm - 100 nails 30mm - 100
nails 50mm - 2 hex keys - DIN coupling - Orion coupling - Storage case
Optional Accessories Staples ATA1029 (1300pcs - 18mm) - ATA1030 (1100pcs - 22mm) -
ATA1031 (1000pcs - 25mm)
Nails ATA1086 (1000pcs - 20mm) - ATA1087 (1000pcs - 30mm) -
ATA1088 (1000pcs - 50mm)
Availability Ex-works + FOB

**AIR BLOW GUN
ATM1050**

Specifications

Recommended pressure 2-4 bar



Includes Long nozzle - Short nozzle - DIN coupling - Orion coupling
Availability Ex-works + FOB

**HIGH PRESSURE CLEANER
1900W GRM1023**

Specifications

Mains voltage 220-240V~, 50Hz
Power input 1900W
Max. pressure 140 bar
Max. waterflow 390 l/h



Features

- Induction motor
- Aluminium pump
- Auto stop system
- Accessory storage facility
- 5m water outlet hose
- 5m power cable

Includes Spray gun - Adjustable spray lance - Turbo lance -
Water inlet adapter with filter - Cleaning pin
Availability FOB

**HIGH PRESSURE CLEANER
2500W GRM1024**

Specifications

Mains voltage 220-240V~, 50Hz
Power input 2500W
Max. pressure 160 bar
Max. waterflow 420 l/h



Features

- Induction motor
- Aluminium pump
- Auto stop system
- Built in detergent tank
- Detergent rate adjustment knob
- Accessory storage facility
- 5m water outlet hose
- 5m power cable

Includes Spray gun - Adjustable spray lance - Turbo lance -
Water inlet adapter with filter
Availability FOB

**HIGH PRESSURE CLEANER
1800W GRM1025**

Specifications

Mains voltage 220-240V~, 50/60Hz
Power input 1800W
Max. pressure 130 bar
Max. waterflow 420 l/h



Features

- Aluminium pump
- Auto stop system
- Built in detergent tank
- Accessory storage facility
- 5m water outlet hose
- 5m power cable

Includes Spray gun - Adjustable spray lance - Water inlet adapter with filter -
Water connector - Cleaning pin
Availability FOB

**HIGH PRESSURE CLEANER
2200W GRM1026**

Specifications

Mains voltage 220-240V~, 50/60Hz
Power input 2200W
Max. pressure 170 bar
Max. waterflow 420 l/h



Features

- Aluminium pump
- Auto stop system
- Built in detergent tank
- Detergent rate adjustment knob
- Accessory storage facility
- 5m water outlet hose
- 5m power cable

Includes Spray gun - Adjustable spray lance - Water inlet adapter with filter -
Cleaning pin
Availability FOB

CORDLESS LEAF BLOWER
20V - 2.0AH LBM1010

Specifications
Mains voltage (charger) 220-240V~, 50/60Hz
Power input 20V-2.0Ah
No load speed 13.000/min.
Max. Air Velocity 180 km/h
Charging time 1 hour



Features
- Cordless, Li-ion technology
- Soft grip

Includes Li-ion battery (20V-2.0Ah) - Charger
Optional Accessories Battery CDA1106
Availability FOB

CORDLESS HEDGE TRIMMER
20V - 2.0AH HTM1002

Specifications
Mains voltage (charger) 220-240V~, 50/60Hz
Power input 20V-2.0Ah
No load speed 1.400/min.
Blade length 580mm
Cutting length 520 mm
Cutting width 12.7 mm
Charging time 1 hour



Features
- Cordless, Li-ion technology
- Dual action safety switch
- Soft grip

Includes Li-ion battery (20V-2.0Ah) - Charger
Optional Accessories Battery CDA1106
Availability FOB

GRASS TRIMMER
350W - 250MM GTM1002

Specifications
Mains voltage 230V~, 50Hz
Power input 350W
Cutting width 250mm
No load speed 11500/min
Wire diameter Ø1.2mm
Wire length 6m



Features
- Tap and go cutting system
- Working height adjustable
- Cable strain relief

Includes Wire spool 1.2mm x 6m
Optional Accessories Wire spool 1.2mm x 6m GTA1001
Availability FOB

GRASS TRIMMER
20V - 2.0AH GTM1003

Specifications
Mains voltage (charger) 220-240V~, 50/60Hz
Power input 20V-2.0Ah
No load speed 8.000/min.
Wire diameter Ø1.2mm
Wire length 5m
Charging time 1 hour



Features
- Cordless, Li-ion technology
- Tap and go cutting system
- Working height adjustable
- Working angle adjustable
- Soft grip

Includes Li-ion battery (20V-2.0Ah) - Side wheel - Charger -
Optional Accessories Wire spool 1.2mm x 5m GTA1002
Availability FOB

ACCESSORIES

AIR ACCESSORY SET 6 PCS
ATA1025

For CRM1044, CRM1045 and CRM1046



STAPLES 40MM 1.000 PCS
ATA1049

For ATM1051



STEEL NAILS 20MM 1.000 PCS
ATA1086

For ATM1044 and ATM1051



COILED HOSE 5M + COUPLINGS
ATA1026

For CRM1044, CRM1045 and CRM1046



STEEL NAILS 30MM 1.000 PCS
ATA1087

For ATM1044 and ATM1051



STEEL NAILS 50MM 1.000 PCS
ATA1088

For ATM1044 and ATM1051



AIR HOSE 10M + COUPLINGS
ATA1027

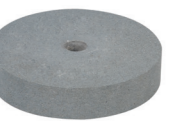
For CRM1044, CRM1045 and CRM1046



GRINDING STONE 150X16X12
7MM P36 GREY

BGA1053

For BGM1019



GRINDING STONE 150X16X12
7MM P60 GREY

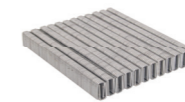
BGA1054

For BGM1019



STAPLES 12MM 1.800 PCS
ATA1028

For ATM1042



GRINDING STONE 150X20X12
7MM P36 GREY

BGA1055

For BGM1020 and BGM1021



STAPLES 18MM 1.300 PCS
ATA1029

For ATM1042 and ATM1051



GRINDING STONE 150X40X12
7MM P80 WHITE

BGA1056

For BGM1020



STAPLES 22MM 1.100 PCS
ATA1030

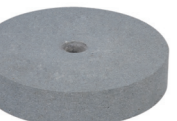
For ATM1042 and ATM1051



GRINDING STONE 200X40X20MM
WET USE

BGA1057

For BGM1021



STAPLES 25MM 1.000 PCS
ATA1031

For ATM1042 and ATM1051



POLISH SET 180MM 5 PCS
AGA1023

For AGM1084P and AGM1120P



STAPLES 30MM 1.000 PCS
ATA1048

For ATM1051



ACCESSORIES

SANDING DISC SET 2X P80 3X P120 180MM AGA1022 For AGM1084P and AGM1120P		BISCUITS 56X23X4MM 50 PCS BJA1004 For BJM1009	
SANDING PAPER SET 225MM 5X P60, 5X P120, 5X P180, 5X P240, 5X P400 DSA1001 For DSM1010		SAW BLADE BJA1005 For BJM1009	
SANDING DISC SET 2X P60 5X P100, 3X P150 150MM BGA1036 For BGM1003		BATTERY 12V - 1.5AH LI-ION CDA1085 For CDM1118 and CDM1119	
SANDING DISC SET P100 10 PCS 150MM BGA1037 For BGM1003		BATTERY 18V - 1.5AH LI-ION CDA1087 For CDM1120 and CDM1131	
SANDING DISC SET P150 10 PCS 150MM BGA1038 For BGM1003		BATTERY 12V - 1.5AH LI-ION CDA1094 For JSM1026, OTM1006, CTM1016	
SANDING DISC SET P150 10 PCS 150MM BGA1038 For BGM1003		BATTERY 18V - 4.0AH LI-ION CDA1096 For CDM1127	
SANDING DISC SET P60 P100 P150, 10 PCS 150MM BGA1039 For BGM1003		BATTERY 20V - 2.0AH LI-ION CDA1106 For GTM1003, HTM1002, LBM1010	
SANDING DISC SET 2X P60 5X P100, 3X P150 150MM BGA1062 For BGM1022		BATTERY 20V - 2.0AH LI-ION CDA1130 For CDM1138	
SANDING BELT SET P60 P100 P150, 3 PCS 915X100MM BGA1058 For BGM1003 and BGM1022		BATTERY 16V - 1.5AH LI-ION CDA1140 For CDM1134	
SANDING BELT SET P100 3 PCS 915X100MM BGA1060 For BGM1003 and BGM1022		BATTERY 12V - 1.5AH CDA1142 For CDM1118, CDM1119, CDM1129	
SANDING BELT SET P60 P100 P120, 3 PCS 533X75MM BSA1013 For BSM1024		BATTERY 18V - 1.5AH LI-ION CDA1144 For CDM1120	




ACCESSORIES

GUIDE RAIL SET CSA1049 For CSM1043		SAW BLADE 250X30/16 40T MSA1026 For TSM1033	
COMBITOOL SET 100 PCS CTA1007 For CTM1010, CTM1012, CTM1016 and CTM1017		SAW BLADE 250X30/16 72T MSA1027 For TSM1033	
COMBITOOL SET 40 PCS CTA1008 For CTM1010, CTM1012, CTM1016 and CTM1017		SAW BLADE 255X30/16 40T MSA1028 For MSM1038	
SAW BLADE 185MM 24T CSA1007 For CSM1039		SAW BLADE 255X30/16 72T MSA1029 For MSM1038	
SAW BLADE 200X30/16 24T MSA1021 For TSM1032 and TSM1036		PRECISION SAW BLADE 85X15 DIAMOND CSA1046 For CSM1043	
SAW BLADE 200X30/16 40T MSA1022 For TSM1032 and TSM1036		PRECISION SAW BLADE 85X15 24T (TCT) CSA1047 For CSM1043	
SAW BLADE 210X30/16/18 24T MSA1024 For MSM1035, MSM1037, MSM1039 and TSM1035		PRECISION SAW BLADE 85X15 44T (HSS) CSA1048 For CSM1043	
SAW BLADE 210X30/16/18 40T MSA1025 For MSM1035, MSM1037, MSM1039 and TSM1035		SANDING BELT SET 10MM 8 PCS, 2X P40, 3X P80, 3X P120 EFA1003 For EFM1001	
		SANDING BELT SET 13MM 8 PCS, 2X P40, 3X P80, 3X P120 EFA1004 For EFM1001	
		STAPLES 8MM 2000 PCS U-SHAPE ETA1009 For ETM1004, ETM1005	
		STAPLES 10MM 2000 PCS U-SHAPE ETA1013 For ETM1004, ETM1005	

ACCESSORIES

<p>STAPLES 12MM 2000 PCS U-SHAPE ETA1014 <i>For ETM1004, ETM1005</i></p> 	<p>SANDING PAD OTA1003 <i>For OTM1005 and OTM1006</i></p> 
<p>STAPLES 14MM 2000 PCS U-SHAPE ETA1010 <i>For ETM1004</i></p> 	<p>HSS SEGMENT SAW BLADE OTA1004 <i>For OTM1005 and OTM1006</i></p> 
<p>GLUE STICKS 11.2X100MM 6 PCS GGA1002 <i>For GGM1002</i></p> 	<p>CARBIDE BLADE OTA1005 <i>For OTM1005 and OTM1006</i></p> 
<p>GLUE STICKS 7X150MM 6 PCS GGA1003 <i>For GGM1003</i></p> 	<p>MULTITOOL ACCESSORY SET 4 PCS OTA1007 <i>For OTM1005, OTM1006, OTM1007 and OTM1009</i></p> 
<p>GLUE STICKS 11.2X150MM 12 PCS GGA1005 <i>For GGM1004</i></p> 	
<p>BRUSH GRA1001 <i>For GRM1022 and GRM1031</i> Availability FOB</p> 	<p>WHISK 120X680MM PMA1004 <i>For PMM1006 and PMM1010</i></p> 
<p>ROTARY BRUSH GRA1002 <i>For GRM1022 and GRM1031</i> Availability FOB</p> 	
<p>WIRE SPOOL 1.2MMX6M GTA1001 <i>For GTM1002</i></p> 	<p>WHISK 140X600MM TWO-PART PMA1008 <i>For PMM1006 and PMM1010</i></p> 
<p>WIRE SPOOL 1.2MMX5M GTA1002 <i>For GTM1003</i></p> 	
<p>PLUNGE CUTTING BLADE OTA1001 <i>For OTM1005 and OTM1006</i></p> 	<p>ROUTER BITS SET 20 PCS PRA1008 <i>For PRM1015 and PRM1021</i></p> 
<p>SCRAPING KNIFE OTA1002 <i>For OTM1005 and OTM1006</i></p> 	

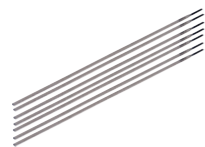
ACCESSORIES

<p>CHISEL SET 82MM 2 PCS PPA1003 <i>For PPM1010</i></p> 	<p>SCROLL SAW BLADE 10TPI 5 PCS SSA1002 <i>For SSM1005 and SSM1007</i></p> 
<p>SANDING PAPER SET P80 5 PCS PSA1007 <i>For PSM1013</i></p> 	<p>SCROLL SAW BLADE 18TPI 5 PCS SSA1003 <i>For SSM1005 and SSM1007</i></p> 
<p>SANDING PAPER SET P120 5 PCS PSA1008 <i>For PSM1013</i></p> 	<p>SCROLL SAW BLADE 25TPI 5 PCS SSA1004 <i>For SSM1005 and SSM1007</i></p> 
<p>SANDING PAPER SET P60, P80, P120, 5 PCS PSA1031 <i>For PSM1024</i></p> 	<p>DIAMOND SAW BLADE 180MM TCA1004 <i>For TCM1010</i></p> 
<p>SANDING PAPER SET P80 10 PCS PSA1033 <i>For DSM1009 and OTM1005</i></p> 	<p>DIAMOND SAW BLADE 200MM TCA1006 <i>For TCM1011</i></p> 
<p>SANDING PAPER SET P120 10 PCS PSA1034 <i>For DSM1009 and OTM1005</i></p> 	<p>ELECTRODES 2.0MM 1 KG WEA1011 <i>For WEM1035 and WEM1042</i></p> 
<p>JIG SAW BLADES 10 PCS JSA1004 <i>For JSM1014, JSM1023, JSM1026, JSM1030 and JSM1034</i></p> 	<p>ELECTRODES 2.6MM 1 KG WEA1012 <i>For WEM1035 and WEM1042</i></p> 
<p>SAW BLADES RECIPROCATING SAW 9 PCS RSA1001 <i>For RSM1019</i></p> 	<p>ELECTRODES 3.2MM 1 KG WEA1013 <i>For WEM1035</i></p> 
<p>SCROLL SAW BLADE 15TPI 5 PCS SSA1001 <i>For SSM1005 and SSM1007</i></p> 	<p>ELECTRODES 2.6MM 5 KG WEA1014 <i>For WEM1035 and WEM1042</i></p> 
<p>SCROLL SAW BLADE 15TPI 5 PCS SSA1001 <i>For SSM1005 and SSM1007</i></p> 	<p>ELECTRODES 3.2MM 5 KG WEA1015 <i>For WEM1035</i></p> 
	<p>ELECTRODES 2.0MM 12 PCS WEA1016 <i>For WEM1035 and WEM1042</i></p> 

ACCESSORIES

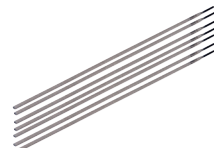
ELECTRODES 2.6MM 12 PCS
WEA1017

For WEM1035 and WEM1042



ELECTRODES 3.2MM 12 PCS
WEA1018

For WEM1035 and WEM1042



SAW BLADE SET 125MM
2 PCS DIAMOND
WSA1001

For WSM1009



SAW BLADE SET 150MM
2 PCS DIAMOND
WSA1002

For WSM1008



MACHINE VICE
TDA1013

For TDM1025 and TDM1026



WWW.FERM.COM

2103-29